



GAT MONTHLY MEMBERSHIP PROGRESS REPORT

Results as of: 7/31/2022

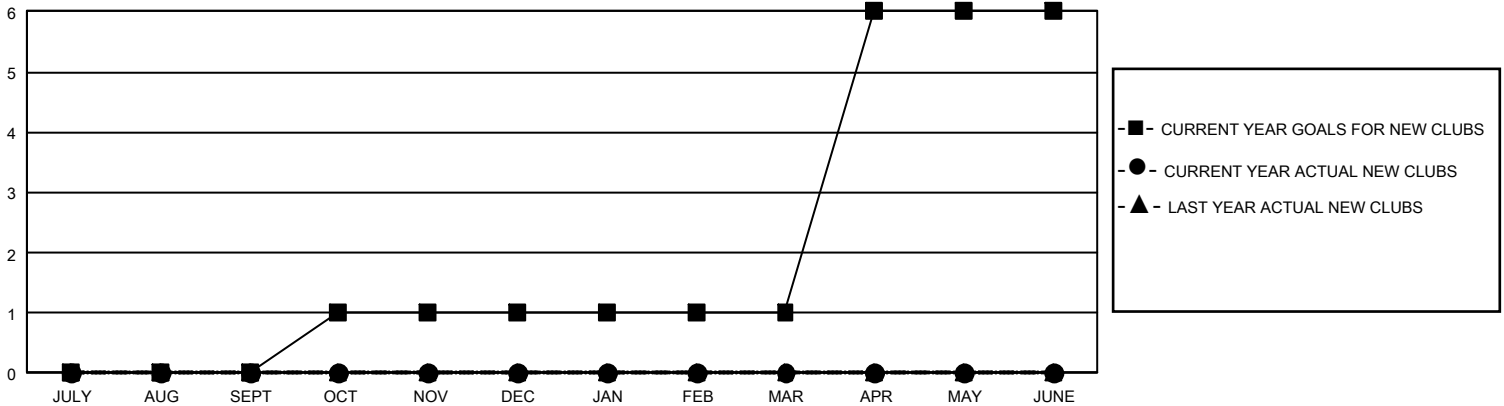
GMT Constitutional Area 7, Group B

REPORT DOES NOT INCLUDE CLUBS IN UNDISTRICTED AREAS.

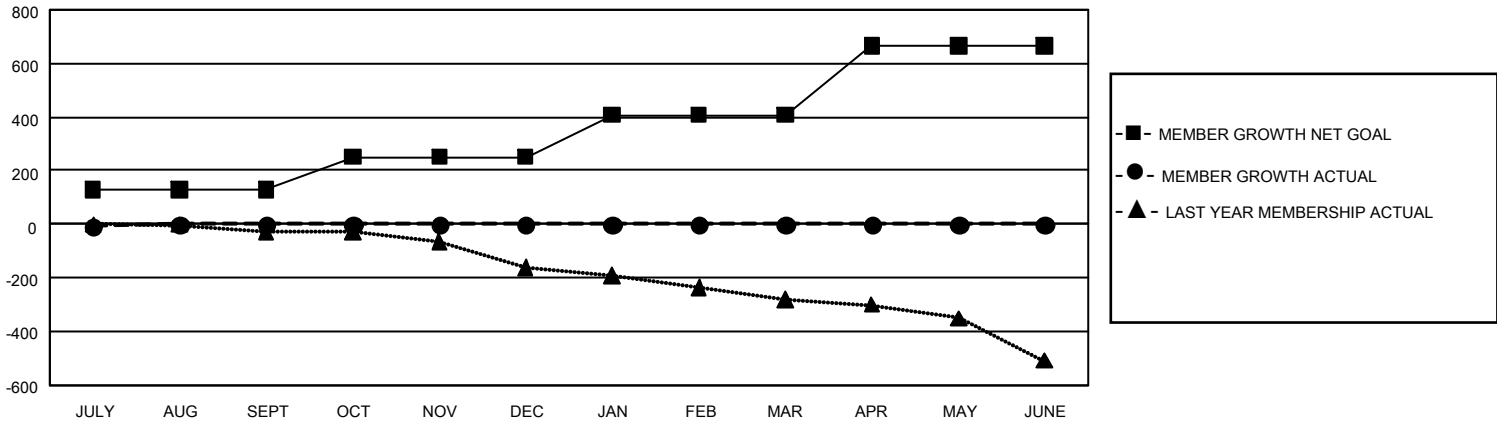
Clubs			
RESULTS FOR 2022-2023			
QUARTER	NEW CLUB GOAL	NEW CLUBS	DROPPED CLUBS
JULY/AUG/SEPT	0	0	3
OCT/NOV/DEC	3	0	0
JAN/FEB/MAR	0	0	0
APR/MAY/JUNE	15	0	0

Members			
RESULTS FOR 2022-2023			
QUARTER	MEMBER GROWTH NET GOAL	MEMBER GROWTH ACTUAL	DROPPED MEMBERS ACTUAL (including transfers)
JULY/AUG/SEPT	128	53	49
OCT/NOV/DEC	123	0	0
JAN/FEB/MAR	157	0	0
APR/MAY/JUNE	257	0	0

GOALS AND ACTUAL NEW CLUBS CUMULATIVE



GOALS AND ACTUAL MEMBERS CUMULATIVE



DROPPED CLUBS: 3	29 CLUBS OF 309 ADDED 1 OR MORE NEW MEMBERS	<u>GENDER DISTRIBUTION</u>	
		MALE	5,507 (68.44%)
<u>DROPPED MEMBERS</u>		FEMALE	2,538 (31.54%)
		NON BINARY	1 (0.01%)
DECEASED	9	PREFER NOT TO ANSWER	0 (0.00%)
CLUB CANCELLED	0	TOTAL FAMILY UNIT MEMBERS	746
OTHER	40	FAMILY MEMBERS PAYING HALF DUES	376
TOTAL	49	CLICK HERE FOR CUMULATIVE MEMBERSHIP DATA	